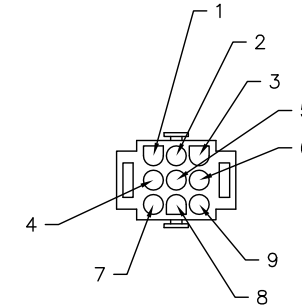
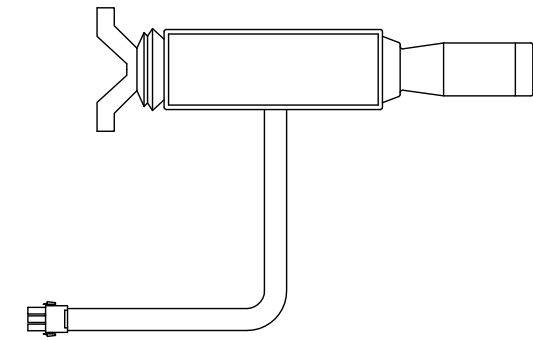

Kit, Morse Shifter Refit

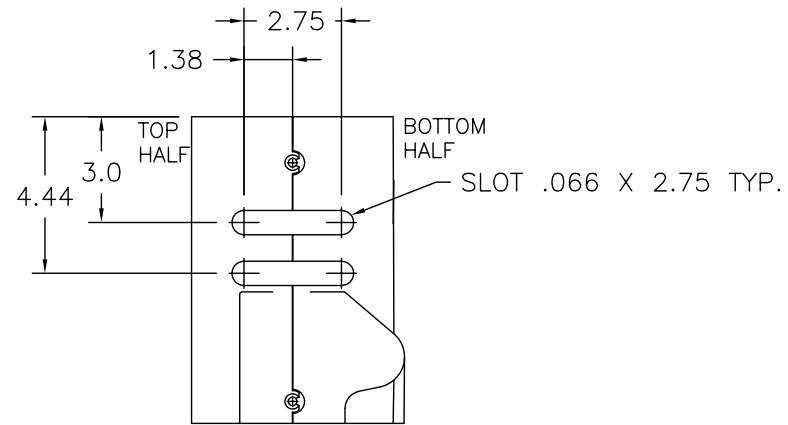
Kit, Morse Shifter Refit

Item	Part No.	Qty	Description	Item	Part No.	Qty	Description
	580774		Kit, Morse Shifter Refit				
1	232908	1	.Relay	10	242377	4	. Capscrew
2	232909	1	. Relay Socket	11	R13808536	2	. Capscrew
3	232910	1	. Relay Spring	12	577424	1	. Spacer Assembly
4	22635	1	. Diode	13	237090	1	. Housing, Conn
5	580598	1	. Shifter ,Trans	14	237092	8	. Connector, Pin
6	580583	1	. Bracket Weldment	15	237091	1	. Housing, Conn
7	R13806980	4	. Flat Washer	16	237093	8	. Connector, Socket
8	223654	4	. Locknut				
9	571495	4	. Bolt, Step				

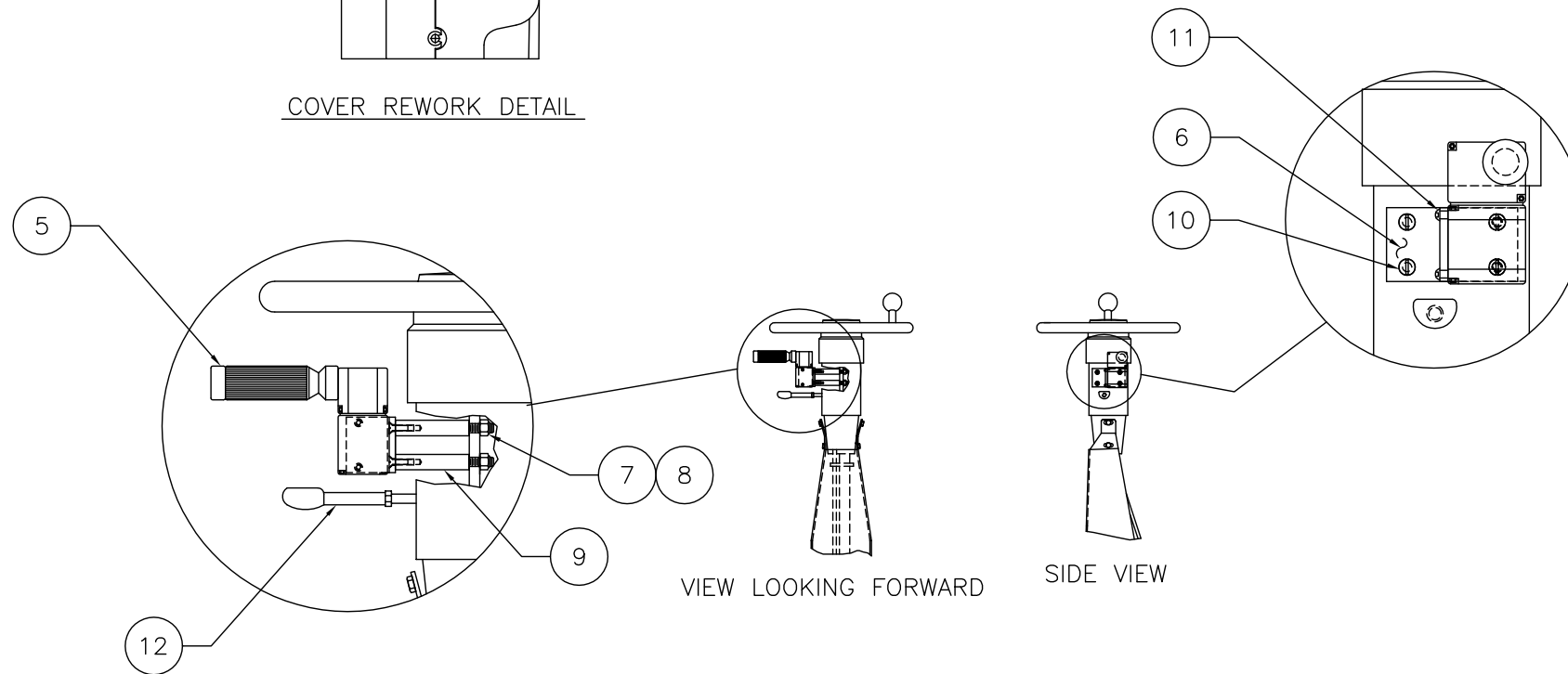
WIRE NO.	PLUG PORT NO.	
1	1	POWER
2	2	NEUTRAL START
3	3	NEUTRAL START
4	4	1ST
5	5	2ND
6	6	FWD
7	7	REV
9	9	3RD



REF SHIFTER BEING REPLACED
567170, 570645 or 570700.



COVER REWORK DETAIL

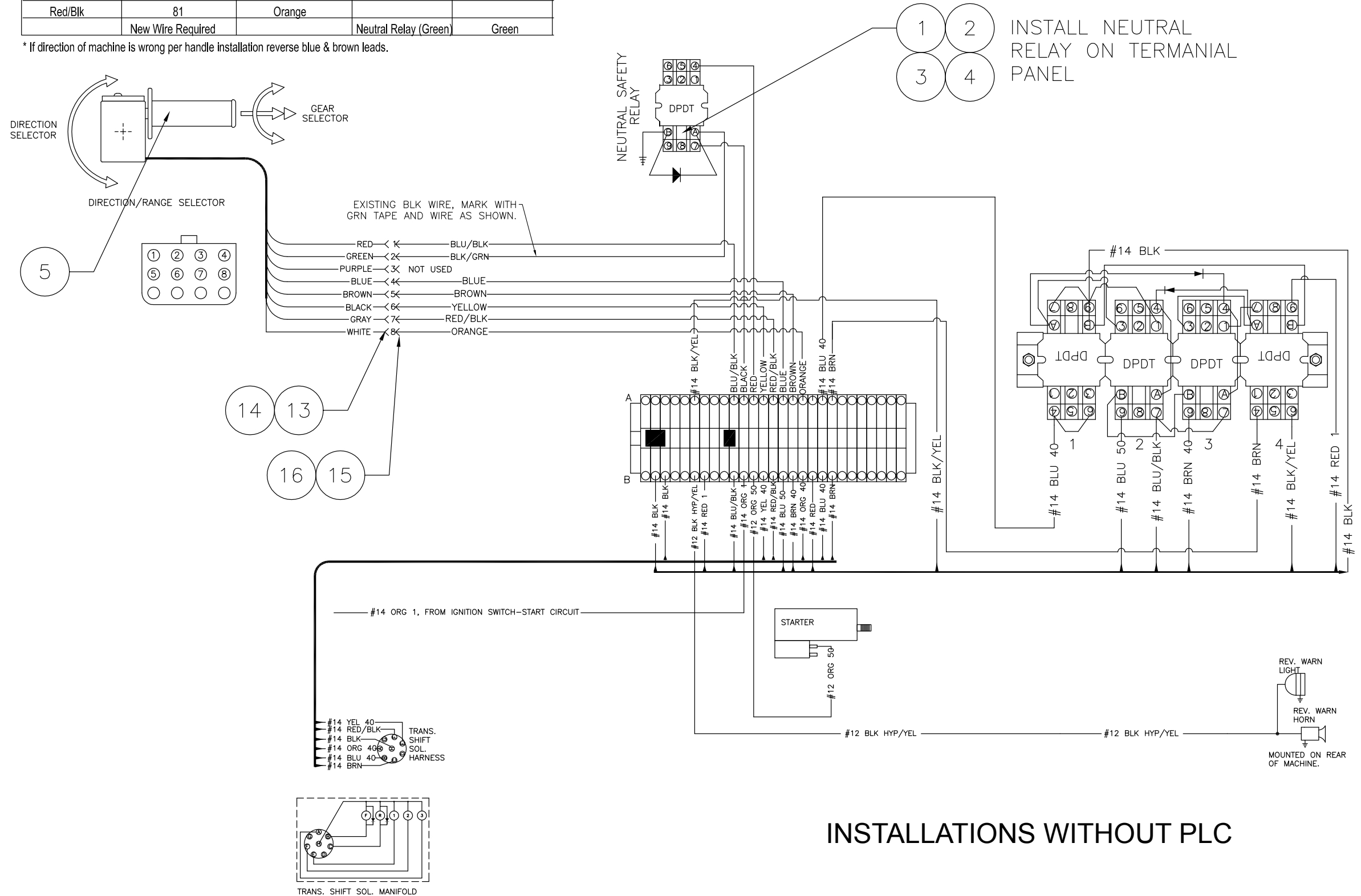


580774 SHIFTER LOCATED
ON STEERING COLUMN

Wiring Conversion for Installation of 580598 Control

Clark Shifter	Wago Terminal # (REF)	Terminal Wire Color	Relay wire Color	Morse Control
Brown	53	Blue	Blue 40	Blue*
Blue	54	Brown	Brown 50	Brown*
Yellow	55	Yellow	Yellow 50	Black
Red/Blk	56	Red/Blk	Red/Blk	Gray
Orange	57	Orange	Orange 40	White
Black	64	Wht/Blk		
Blu/Blk	52	Red/Wht	Blu/Blk	Red
Red/Blk	81	Orange		
	New Wire Required		Neutral Relay (Green)	Green

* If direction of machine is wrong per handle installation reverse blue & brown leads.



Wiring Conversion for Installation of 580598 Control

"CLARK"	PLC Wire Color	Morse Control
Brown	Blue	Blue*
Blue	Brown	Brown*
Yellow	Yellow	Black
Red/Blk	Red/Blk	Gray
Orange	Orange	White
Black	Wht/Blk	
Blu/Blk	Red/Wht	Red
Red/Blk	Orange	

* If direction of machine is wrong per handle installation reverse blue & brown leads.

